



Recycle Disassemble Instruction (Dismantled Information)

Requirements according to ANNEX VII of DIRECTIVE 2012/19/EU
on waste electrical and electronic equipment (WEEE)

Materials and components with hazardous content

LCDs may contain hazardous substances like Pb and BFRs which are covered by exemptions under the RoHS directive. However, the majority is present in the printed circuit boards assembly. In order to reduce emissions as much as possible, a complete disposal of the old appliance is required. This treatment may only be performed in authorized handling plants.








Product Name: Interactive flat panel

Model No.: RE6501





Disassembly Tools

Tool	picture
Philips Screwdriver for M3 screw	 A red-handled Philips screwdriver with a silver metal shaft and a black tip, lying horizontally on a light-colored wooden surface.
nosed pliers	 A pair of red-handled nose pliers with silver metal jaws, lying horizontally on a light-colored wooden surface.
Diagonal Cutting Pliers	 A pair of red-handled diagonal cutting pliers with silver metal jaws, lying horizontally on a light-colored wooden surface.
Slotted screwdriver	 A green-handled slotted screwdriver with a silver metal shaft and a black tip, lying horizontally on a light-colored wooden surface.
Six Point Sockets	 A yellow-handled six-point socket screwdriver with a silver metal shaft and a black tip, lying horizontally on a light-colored wooden surface.
Philips Screwdriver for M2.5 screw	 A red-handled Philips screwdriver with a silver metal shaft and a black tip, lying horizontally on a light-colored wooden surface.
knife	 A silver metal folding knife with a black handle, lying horizontally on a light-colored wooden surface.



Disassembly process

Remove 15 screws that M4 ×6mm flat head nickel plated mechanical screw



1.Remove 8 screws that M3 ×6mm meson head nickel-plated mechanical screw

2.Remove the Horn plate
3.Tear the EVA pad off the horn cover



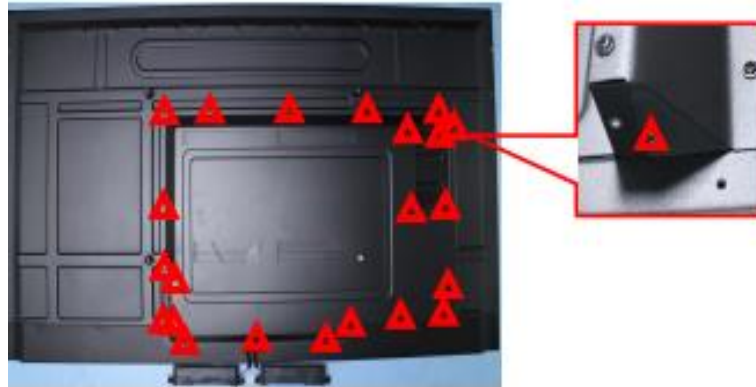
Remove 8 screws that $\Phi 3 \times 6$ mm P head spring washers flat pad blue zinc plating machine screws.





1.Remove 22 screws that M3 x6mm meson head nickel-plated mechanical screw.

2.Remove the rear cover



1.Pull the horn line

2.Remove the horns



1.Remove 10 screws that M3 x6mm meson head nickel-plated mechanical screw

2.Remove 2 screws that M4 x6mm flat head nickel-plated mechanical screw

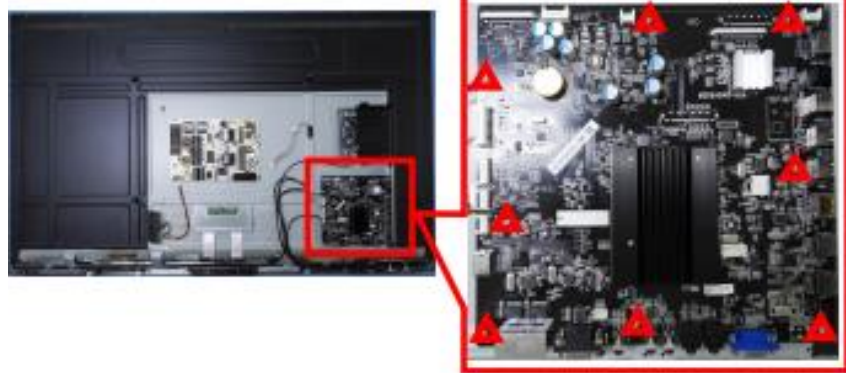
3.Remove the back shell





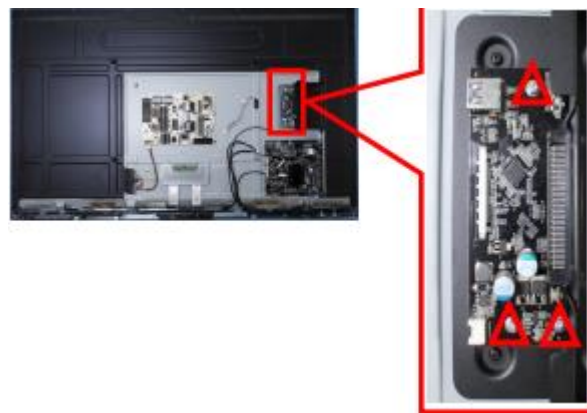
1.Remove 8 screws that M3x6mm P head with spring pad with flat pad coated with blue zinc mechanical screw

2.Remove The main board



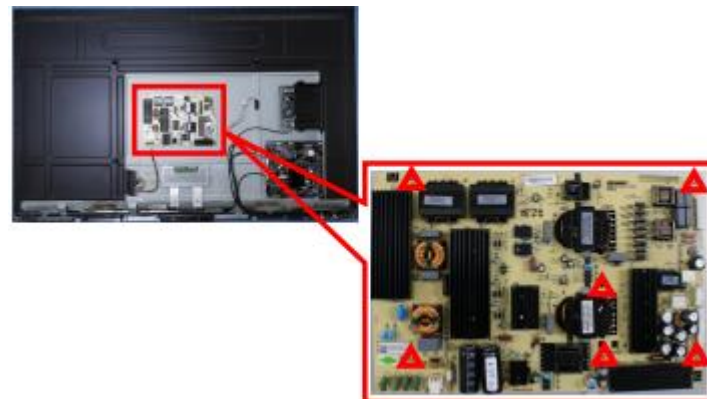
1.Remove 3 screws that M3x6mm P head with spring pad with flat pad coated with blue zinc mechanical screw

2.Remove OPS adapter plate



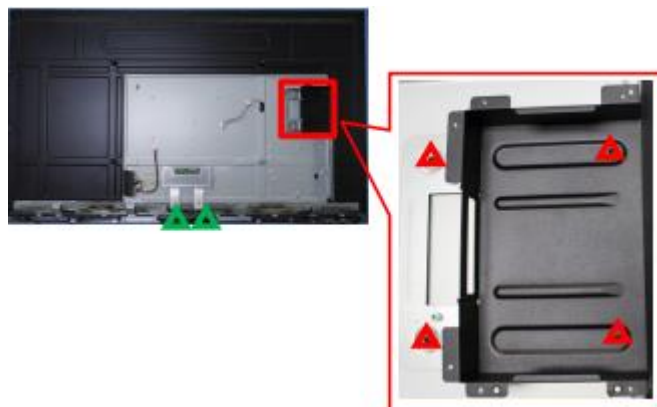
1.Remove 6 screws that M3x6mm P head with spring pad with flat pad coated with blue zinc mechanical screw

2.Remove The power supply board

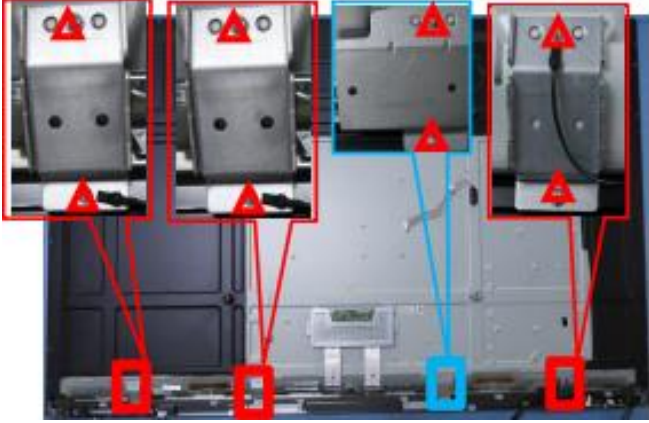
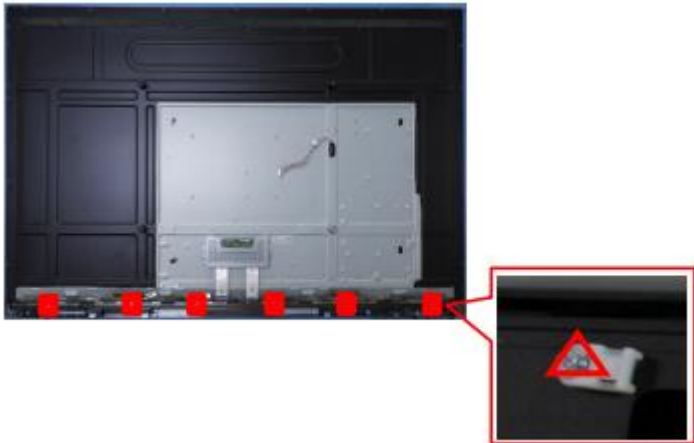



1.Remove 4 screws that M3x4mm meson head nickel-plated mechanical screw

2.Remove 2 screws that M3x6mm P head with spring pad with flat pad coated with blue zinc mechanical screw





<p>3.Remove OPS guide bracket and WIFI board fixed bracket</p>	
<p>1.Remove 8 screws that M3x6mm P head with spring pad with flat pad coated with blue zinc mechanical screw</p> <p>2.Remove Screen fixing brackets</p>	
<p>1.Remove 6 screws that M3x6mm P head with spring pad with flat pad coated with blue zinc mechanical screw</p> <p>2.Remove The Cable tie fixed seats</p>	
<p>1.Remove 6 screws that $\Phi 3 * 2.5 * 5$ mm resistance to fall outside the hexagon blue zinc plated screws.</p> <p>2.Remove 8 screws that M 3 * 9 +3 mm resistance to fall outside the hexagon blue zinc plated screws.</p>	



1. Remove 11 screws that M3x6mm P head with spring pad with flat pad coated with blue zinc mechanical screw.

2. Tear off 10 light-blocking mylar tablets



Disassembly Time

Total time: about 35 minutes